


insē



Please do not hesitate to contact us whenever you want, we are always more than happy to help you!

 support@inselife.com

 www.inselife.com

MADE IN CHINA



General Tips, FAQ, etc.
<https://inselife.com/>



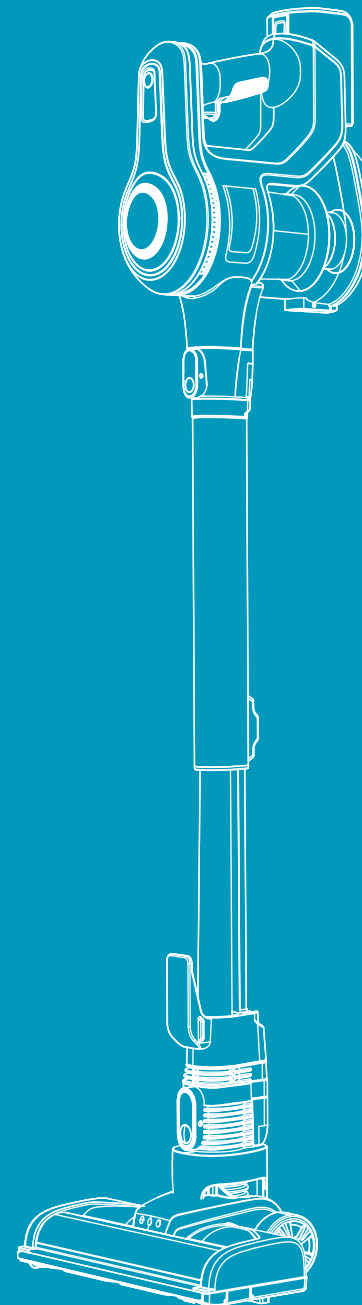
Installation and Usage
bit.ly/inseyoutube-n5S

insē

USER MANUAL

Cordless Stick
Vacuum Cleaner

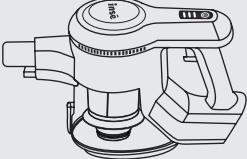
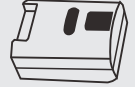
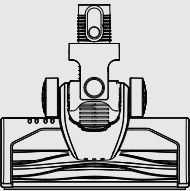



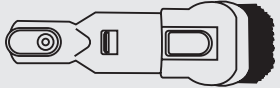
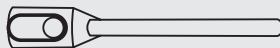
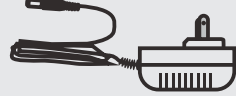



N5/N5S



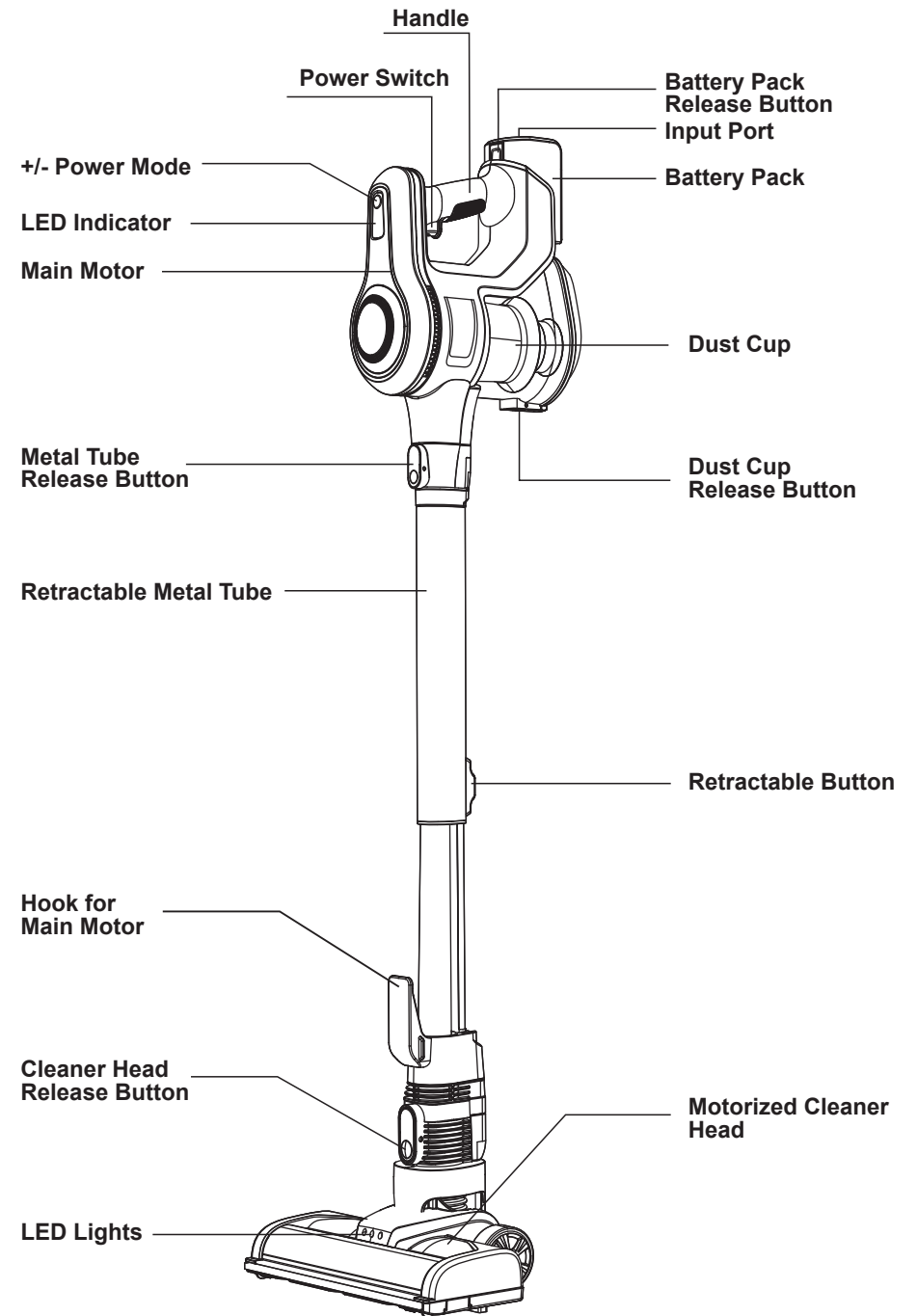
CONTENTS

Product Parts List and Schematic	01
Product Technical Parameters	03
Safety Warning	03
Assembly and Combinations	05
Ready to Use	06
Charge	07
Charge Method	07
Battery Indicators	07
Battery Safety	08
Storage	09
Daily Maintenance	09
Clean Handheld Part of the Main Motor	09
Clean Detachable Roller Brush	10
Clean Strainer and High Efficiency Filter	10
Troubleshooting	11
Warranty	11
Warning	12

Product Parts List and Schematic

<p>Main Motor X1</p> 	<p>Battery Pack X1</p> 	<p>Motorized Cleaner Head (with Roller Brush) X1</p> 
<p>Retractable Metal Tube X1</p> 	<p>HEPA X1</p> 	<p>Wall Mount X1</p> 
<p>2 in 1 Brush X1</p> 	<p>Long Crevice X1</p> 	<p>Power Adapter X1</p> 
<p>2 in 1 Cleaning Tool X1</p> 	<p>User Manual X1</p> 	<p>Quick Start Guide X1</p> 

INSE Products are eco-friendly. When the machine is worn out or no longer in use, please contact your local authority for recycling instructions.



Product Technical Parameters

Product Category	Vacuum Cleaner	Product Model	N5S
Dust Cup Capacity	1.2L	Rated Voltage	22.2V
Product Net Weight (Handheld Dust Machine)	3.3lb	Rated Power	180W
Product Weight (Including All Attachments)	6.2lb	Charging Time	5 hours
Power Adapter Input	100-240V~50/60Hz	Battery Capacity	2200mAh
Power Adapter Output	27V 500mA	/	/

Safety Warning

- When using electrical appliances, basic safety precautions should always be followed.
- Check the voltage indicated on the rating plate and confirm you connect the appliance to the power supply with correct voltage.
- Children whose aged from 8 years and above, people who with reduced physical, sensory or mental capabilities or lack of experience and knowledge can use this appliance, only if they have been given supervision or instruction concerning to use the appliance in a safe way and understand the hazards involved.
- Children should be supervised to ensure that they do not play with the appliance.
- This appliance is not a toy.
- If any part is damaged due to human error, only a qualified electrician can repair it. Please note the appliance is not under warranty in this case.

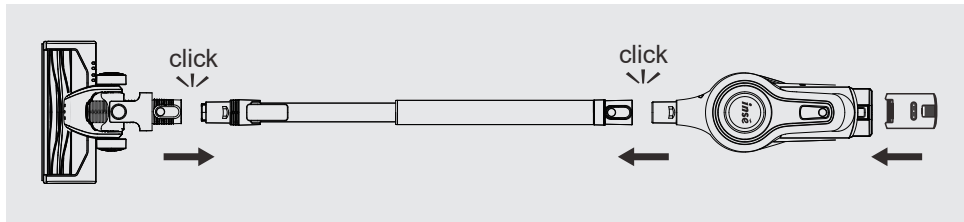
- Improper repairs may put the user in danger.
- Keep away from children aged below 8.
- Keep the appliance away from heat or sharp edges that could cause damage.
- Keep the appliance away from other heat emitting appliances.
- Do not immerse the appliance in water or any other liquid.
- Do not operate the appliance with wet hands.
- Do not expose the appliance to rain.
- Do not remove from the adaptor from the mains power supply by pulling the cord; switch off and remove the plug by hand.
- Do not use the adaptor to recharge non-rechargeable batteries.
- Do not use the appliance if it has been dropped or if there are visible signs of damage.
- Do not use the appliance for anything other than its intended use.
- Do not use any parts/accessories or adaptors other than those supplied with this appliance, as this may cause damage.
- Do not use any damaged accessories or adaptors.
- Do not use this appliance outdoors.
- Do not store the appliance in direct sunlight or in high humidity conditions.
- Do not use if any of its openings are blocked.
- Do not use the appliance to pick up flammable liquid, matches, cigarette ends, hot ashes or any hot, burning or smoking objects.
- Do not use to pick up sharp objects such as glass or screws, etc.
- Do not use to pick up water or any other liquid, as this may cause electric shock.
- Take care when equipping accessories with rotating parts as this could cause entrapment
- Switch off the appliance and disconnect it from the mains power supply before changing or fitting accessories.
- Always ensure that the appliance has cooled fully after use before performing any cleaning or user maintenance.
- Use of an extension power cord with the power adapter is not allowed.
- Only use with provided power adapter.
- This appliance is intended for domestic use only. It should not be used for commercial purposes.

Caution

- The metal tube contains inner electric connections.
- Do not use to pick up any liquid.
- Do not immerse in water for cleaning.
- The metal tube should be checked regularly and must not be used if damaged.

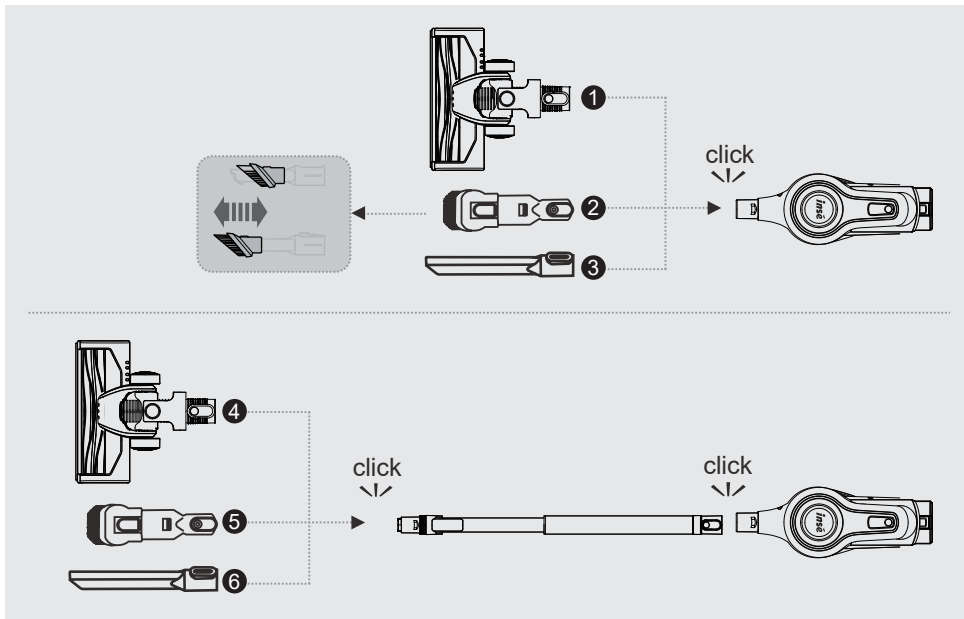
Assembly and Combinations

To assemble the powerful cordless stick vacuum cleaner, please follow the instructions as shown.



- ❗ Ensure a tight connect of the whole machine by a clear sound of click in each step.
- ❗ If you want to disassemble the vacuum, just press the release button on each part.

If you want to connect it with other attachments and work in different situations, please follow the **COMBINATION** instructions below.



Ready to Use

1. Preparation

Please check if the battery power is sufficient before using. It's suggested to charge over 5-6 hours before the first time of use to ensure utmost performance of the product. Choose the correct attachment according to the cleaning area.

2. Start to Work

First-press the Power Switch to turn on the vacuum; second-press it to change to high-suction mode; third-press it to turn it off.

Or you can press the +/- Button to switch between high-suction mode and standard-suction mode.

3. Dust Cup Cleaning

Please clean the dust cup in time when the -MAX- sign is approached.

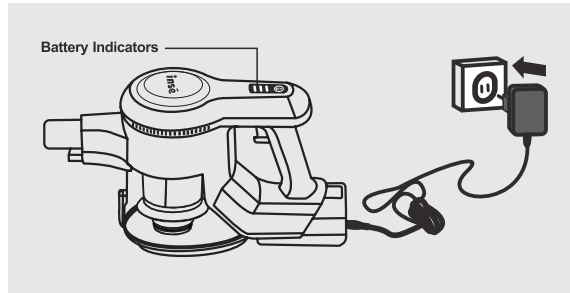
Turn off the machine and then press the dust cup open button to empty it.



Charge

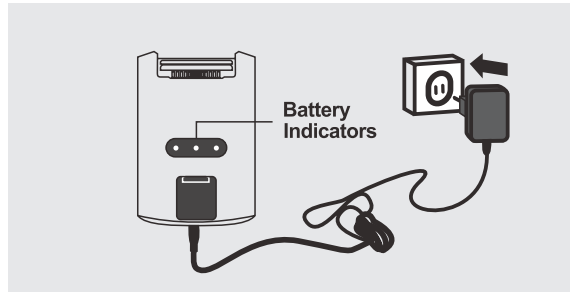
Method 1

Insert the battery pack into the main motor and then connect it with the power adapter



Method 2

Connect the independent battery with the power adapter



Battery Indicators

On Work



- Three solid blue lights: **full power**



- Two solid blue lights: **medium power**

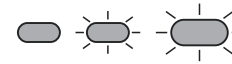


- One solid blue light: **low power**



- One blinking blue light: **lower than 5% of the total power, needs a recharge**

During Charging



- Three blue lights blinking successively: **charging**



- Three steady lights: **charging complete**

Notes:

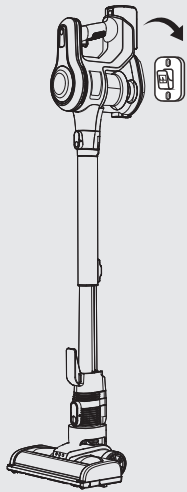
- * The machine cannot be turned on during charging
- * Charge the battery only with the adapter provided by INSE
- * When you won't use the battery for a long time, please store it in a cool dry place. In this situation, please ensure that the battery has been half charged (2 glowing indicator lights)
- * If you need an additional battery, please purchase from an authorized distributor of INSE

Battery Safety

- If the battery pack becomes exhausted, it should be removed from the product to avoid leakage.
- In the event of the battery pack leaking, do not allow any liquid to come into contact with the skin or eyes.
- If contact has been made, wash the affected area with copious amounts of water and seek medical advice.
- Keep the battery pack out of the reach of children.
- Secondary battery packs need to be charged before use. After extended periods of storage, it may be necessary to charge and discharge the batteries several times to obtain maximum performance.
- Do not leave battery packs on charge for prolonged periods of time.
- Do not use any charger other than that specifically provided for use with the product.
- The supply terminals are not to be short-circuited.
- Do not store above 60°C. Avoid storing in direct sunlight.
- Do not use any battery packs that are not designed for use with the product.
- Do not dispose of the battery pack in a fire.
- Do not crush, puncture, dismantle or otherwise damage the battery pack.
- Do not dismantle, open or shred battery packs.
- Do not expose the battery pack to heat or fire as it may explode.
- Do not subject the battery pack to mechanical shock.
- Do not dispose of the exhausted battery pack in household waste.
- To dispose of the exhausted battery pack, take it to a local recycling station.
- Contact the local government offices for further details.
- This appliance is fitted with a 22.2V 2200mAh Li-ion rechargeable battery.

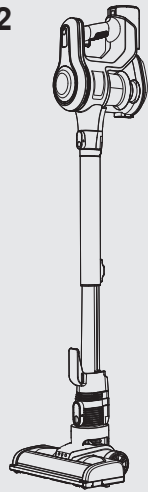
Storage

Method 1



Hanging on the wall

Method 2



Self-Standing

Daily Maintenance

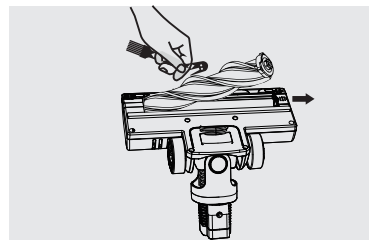
In order to ensure max performance of the vacuum, please regularly maintain its components.

Clean Handheld Part of the Main Motor

- ❗ Please turn off the vacuum before cleaning.
- ❗ Wipe the surface with a clean cloth; avoid the water getting into the inner part of the vacuum.
- ❗ Do not place the vacuum under direct sunlight or in wet places after cleaning.

Clean Detachable Roller Brush

1. Push the buckle and take out the brush.
2. Use the 2-in-1 cleaning tool to remove the tangled hair.



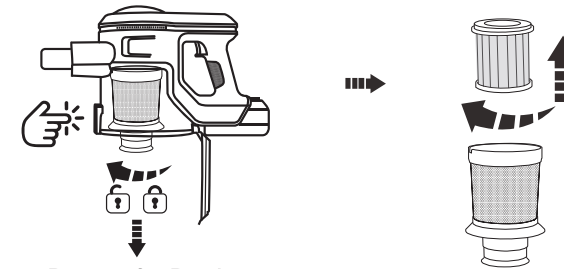
Clean Strainer and High Efficiency Filter



IMPORTANT!

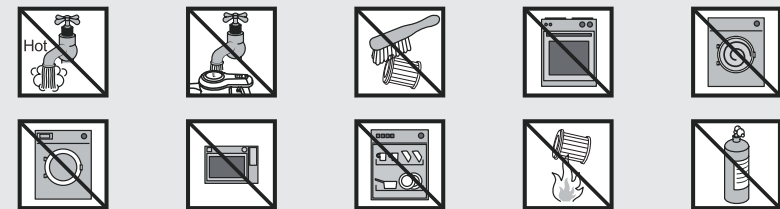
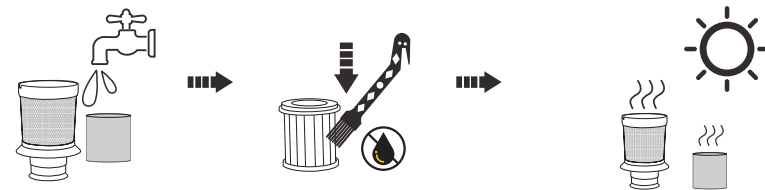
1. Please check and clean the High-efficiency filter/HEPA regularly;
2. Please clean the filter in time if the suction performance decline;
3. Please replace the filter/HEPA if it's broken or it cannot maintain the suction performance of the vacuum cleaner.
4. Please do not bend or squeeze the HEPA.

1. Hold the main motor, press the button to open the dust bin cover, rotate the strainer and filter one by one to take them out. (see as pictures below)



Remove after Rotating

2. If they are too dirty, please use the 2-in-1 cleaning gadget to clean the dust from the HEPA surface; please rinse the stainless steel strainer and white mesh filter with cool water until the outflow is clean water.
3. Ensure the stainless steel strainer and the white mesh filter are **completely dry before refitting**.



Troubleshooting

Problems		Possible Causes	Solutions
01	Vacuum cleaner doesn't work	1. Low battery 2. Suction port is blocked	1-1. Charge the main motor with battery inserted 1-2. Take out the battery and charge it 2. Clean the blockage
02	Suction power is weaken	1. Dust cup and the inner cotton filter is full of dust 2. The cleaner head is blocked with hair, spitball or plastic bag, etc.	1. Clean the dust cup and filter 2. Clean the cleaner head
03	Motor has strange sound when working	Main suction port or metal tube are blocked	Clean the blockage
04	Roller brush stops spinning	Roller brush is tangled with hair	Clean all hair tangled with the brush, also remove the side cover of the brush to remove the hair and dust

Please contact support@inselife.com if the solution above doesn't help.

Warranty

NOTE:

THIS WARRANTY TERM GIVES YOU SPECIFIC LEGAL RIGHTS, AND YOU MAY ALSO HAVE OTHER RIGHTS WHICH VARY FROM STATE TO STATE.

12-month Warranty & Lifetime Customer Support

Only apply to eligible purchases made directly from the INSE authorized distributors. Warranty coverage applies to the original owner and to the original product only and is not transferable.

How to Initiate A Warranty Claim

If your appliance operates improperly while in use under normal household conditions within the warranty period, please contact our customer support [support@inselife.com] or visit www.inselife.com to fill out the warranty form to initiate a warranty claim.

For more warranty details, please refer to www.inselife.com.

All rights are reserved by INSE official website.

WARNING

Read all safety warnings and instructions. Failure to follow the warnings and instructions may result in electric shock, fire and/or serious injury.

1. Prevent unintentional starting ensure the switch is in the off-position before connecting pack, picking up, or carrying the appliance. Carrying the appliance with your finger on the switch or energizing appliance that have the switch on invites accidents.
2. Disconnect the battery pack from the appliance before making any adjustments changing accessories or storing appliance. Such preventive safety measures reduce the risk of starting the appliance accidentally.
3. Recharge only with the charger specified by the manufacturer. A charger that is suitable for one type of battery pack may create a risk of fire when used with another battery pack.
4. Use appliances only with specifically designated battery packs. Use of any other battery packs may create a risk of injury and fire.
5. When battery pack is not in use, keep it away from other metal objects, like paper clips, coins, keys, nails, screws or other small metal objects, that can make a connection from one terminal to another. Shorting the battery terminals together may cause burns or a fire.
6. Under abusive conditions, liquid maybe ejected from the battery; avoid contact. If contact accidentally occurs, flush with water. If liquid contacts eyes, additionally seek medical help. Liquid ejected from the battery may cause irritation or burns.
7. Do not use a battery pack or appliance that is damaged or modified. Damaged or modified batteries may exhibit unpredictable behavior resulting in fire, explosion or risk of injury.
8. Do not expose a battery pack or appliance to fire or excessive temperature. Exposure to fire or temperature above 130°C may cause explosion. The temperature of 130°C can be replaced by the temperature of 265 °F.
9. Follow all charging instructions and do not charge the battery pack or appliance outside of the temperature range specified in the instructions. Charging improperly or at temperatures outside of the specified range may damage the battery and increase the risk of fire.
10. Have servicing performed by a qualified repair person using only identical replacement parts. This will ensure that the safety of the product is maintained.
11. Do not modify or attempt to repair the appliance or the battery pack (as applicable) except as indicated in the instructions for use and care.